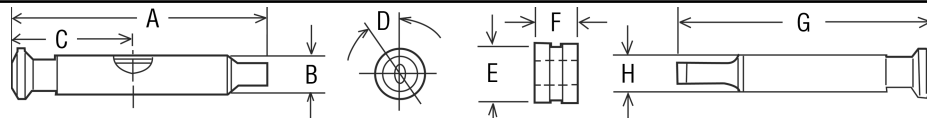


**TABLE 5. INTERCHANGEABLE TOOLING FOR ROTARY TABLET PRESSES^{1,2}
(3/4" PUNCH BARREL AND 0.945" DIE)**



	A	B	C	D	E	F	G	H
INCHES	5.250	0.748	2.500	35°	0.945	0.875	5.250	0.748
MILLIMETERS	133.35	19.00	63.50	35°	24.003	22.225	133.35	19.00
CADMACH	COURTOY		FETTE³		HATA⁴		KIKUSUI⁵	
BBC-45	R1/2LABO-22		P-21/35		HT-AP22-SSU		AQUARIUS3 0824SW-24	
BBC4-45	R090F-26		P-31/51		HT-AP65-3L		AQUARIUS3 1045SW-45	
K5500-55	R100-36*		P-100/33		HT-AP71-3L		AQUARIUS3 1067DW-67	
K6100-61	R100M-36		P-1200/30		HT-CVX45-MSU		GEMINI 0867DS-67	
	R190-36*		P-2080/43		HT-CVX65-LDU		LIBRA 0845SS-45	
	R190F-36		P-2200/43		HT-HX77-LDU		LIBRA2 0845SS-45	
	R200-65*		P-3000/55		HT-X29-SSU		NEWGEMINI 0867DS-67	
	R200M-65*		P-3100/55		HT-X45-MSU		OCTANS 845-45*	
	R290-65		P-3200/73		HT-X65-LDU		VIRGO 0524SS-24	
	R290F-65		PT2100/43		HT-X71-LDU			
	R292-65*		PT3090/73					
	R292F-65		1090 WiP/30					
	MODUL D-81		1200i/30					
	MODUL S-46		2090i/43					
			2090WiP/43					
			2200i/43					
			3090i/73					
			3090WiP/73					
			3200i/73					
			4090i/113					
KILIAN⁶	KORSCH	MANESTY		NATOLI	RIVA		SE JONG	
PRESSIMA-19	PH 100-3	B3B-23*		NP-100-45	BB-2-35		MRC-45	
SYNTHESIS 300-27	PH 100-6	B4-30			BB2G-35			
SYNTHESIS 330-27	PH 100-8	BB3-23*			COMPACTA-24			
SYNTHESIS 500-45	PH 230-20	BB3B-33, 39 & 45*			HYDROPRESS-41			
SYNTHESIS 700-77	PH 250-30	BB4-39			PICCOLA-10			
	PH 300-43	BETAPRESS-23*			PICCOLA BILAYER-14			
	PH 800-77	ELITE 450-55 & 61*			PRE COMPRESS-41			
	XL 100-12	ELITE 800-69 & 75*						
	XL 200-30	EXCELAPRESS-55 & 61*						
	XL 400-44	EXPRESS-30*						
	XL 800-87	EXPRESS MKII-34						
	XL 200-WIP-30	LAYERPRESS-47*						
	XL 400-WIP-44	NOVAPRESS-55 & 61*						
	XL 800-WIP-87	NOVAPRESS 2-55 & 61*						
	XP-1	NOVAPRESS DIAMOND-55 & 61						
		ROTAPRESS DIAMOND-75 ⁷						
		ROTAPRESS MKI, II, IIA-55 & 61*						
		ROTAPRESS MKIII-69 & 75*						
		ROTAPRESS MKIII, IV, V-75*						
		UNIPRESS-30 & 34*						
		UNIPRESS DIAMOND-30 & 34						

NOTES: * MODEL DISCONTINUED BUT MAY STILL BE SUPPORTED BY PRESS MANUFACTURER.

1. A KEY IS USUALLY NOT REQUIRED ON ROUND TOOLING.

2. SOME PRESSES MAY REQUIRE SCREWED-IN FEATHER KEYS. CONTACT PRESS MANUFACTURER FOR RECOMMENDATIONS.

3. FOR MOST FETTE PRESSES, "B" AND "H" DIMENSIONS ARE ENGINEERED WITH TURRET BORE SIZE SET AT 0.7500 [19.05]. SOME FETTE PRESSES, HOWEVER, HAVE A TURRET BORE SIZE OF 0.7488-0.7496 [19.02-19.04]. CONTACT PRESS MANUFACTURER FOR APPROPRIATE DIMENSIONS FOR FETTE PRESSES.

4. THE TIP LENGTH OF UPPER PUNCHES WILL CHANGE ON ALL HATA PRESS MODELS IF UPPER PUNCH SEAL PLATES ARE INSTALLED ON THE MACHINES. CONTACT PRESS MANUFACTURER FOR APPROPRIATE DIMENSIONS.

5. KIKUSUI HAS REVISED ITS FORMAT FOR PRESS MODEL NAMES. MACHINES LISTED IN THE FIFTH EDITION AND THEIR NEW MODEL NAMES ARE AS FOLLOWS: GEMINI 867-67 = GEMINI 0867DS-67; LIBRA 845-45 = LIBRA 0845SS-45; VIRGO 524-24 = VIRGO 0524SS-24. THE MODEL OCTANS 845-45 HAS BEEN DISCONTINUED.

6. TSM TOOLING WITH MINOR LIMITATIONS. CONSULT PRESS MANUFACTURER FOR FURTHER DETAILS.

7. MODEL AVAILABLE BY SPECIAL REQUEST ONLY.